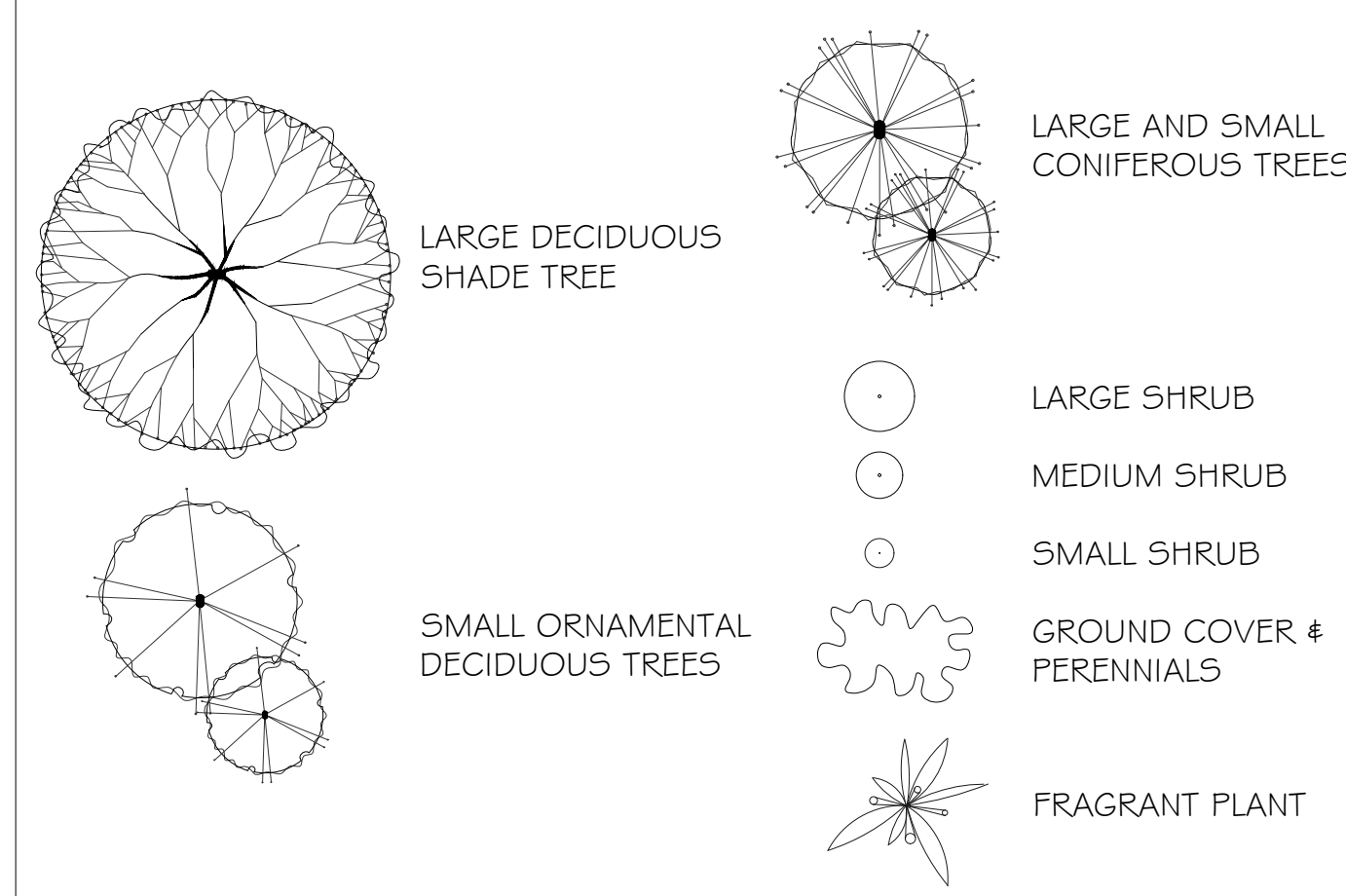


SOFTSCAPE LEGEND



TREES TO BE RETAINED (Symbol: Circle with +)
 TREES TO BE REMOVED (Symbol: Circle with -)

TREE REPLACEMENT PLAN

OF TREES RETAINED: 5
 # OF TREES REMOVED: 9
 # REPLACEMENT TREES REQUIRED: 18
 # REPLACEMENT TREES PROVIDED: 41*
 (*NOTE: REPLACEMENT TREE CALCULATIONS ARE FOR TREES WITHIN PROPERTY LINES & DO NOT INCLUDE TREES IN PLANTERS OR CONIFERS.)

% CONIFER TREE COVERAGE

OF CONIFERS (ON SITE): 38
 TOTAL # OF TREES (ON SITE): 69
 CONIFER TREE COVERAGE: 55%

LIGHTING LEGEND

BOLLARD LIGHT (Symbol: Circle with dot)

SUGGESTED PLANT LIST

KEY	COMMON NAME	BOTANICAL NAME	SIZE
TREES	PDOG Pacific Flowering Dogwood	Cornus nutalli var. 'Eddies White Wonder'	5 cm Cal.
	CRIM Crimson King Maple	Acer platanoides var. 'Crimson King'	5 cm Cal.
	STYR Japanese Snowbell	Styrax japonica	6 cm Cal.
	THUJ Upright Cedar	Thuja occidentalis var. 'Smaragd'	2.0m Ht.
	KMAG Magnolia Kobus	Kobushi magnolia	7 cm Cal.
	HANI Dappled Willow	Salix integra var. 'Hakuro-Nishiki'	#7 Pot
	VMAP Vine Maple	Acer circinnatum	6 cm Cal
	JMAP Red Japanese Maple	Acer palmatum var. 'Bloodgood'	6 cm Cal
	SERB Serbian Spruce	Picea omorika	2.5m Ht.
LARGE SHRUBS	LRHA Rhododendron	Rhododendron var. 'Pink Walloper'	#5 Pot
	LRHB Rhododendron	Rhododendron var. 'Gomer Waterer'	#5 Pot
	CAMA Elderberry	Sambucus nigra var. 'Black Beauty'	#5 Pot
	OSMA Burkwood Osmanthus	Osmanthus x burkwoodii	#5 Pot
	CJUN Columnar Juniper	Juniperus var. 'Compressa'	#5 Pot
	NINE Ninebark		
MEDIUM SHRUBS	MRHA Rhododendron	Rhododendron var. 'Unique'	#5 Pot
	MRHB Rhododendron	Rhododendron var. 'Christmas Cheer'	#5 Pot
	ABE Glossy Abelia	Abelia x grandiflora var. 'Edward Goucher'	#2 Pot
	PIEV Variegated Flens	Flens japonica var. 'Variegata'	#5 Pot
	MEX Mexican Orange Blossom	Choisya ternata var. 'Ateco Pearl'	#5 Pot
	LILC Purple French Lilac	Syringa vulgaris var. 'Sensation'	#5 Pot
	BAR Barberry	Berberis thunbergii var. 'Rosy Glow'	#2 Pot
	ROSA Austin Rose	Rosa var. 'Winchester Cathedral'	#5 Pot
	ROSB Austin Rose	Rosa var. 'Heritage'	#5 Pot
	SKJM Japanese Skimmia	Skimmia japonica	#2 Pot
	VACC Mountain Blueberry	Vaccinium ovatum	#2 Pot

SMALL SHRUBS	DWJL Dwarf Lily of the Valley	Plens japonica var. 'Debutante'	#1 Pot
	EUOF Creeping Euonymus	Euonymus fortunei var. 'Emerald & Gold'	#1 Pot
	AZAP Evergreen Azalea	Azalea japonica var. 'Gumpo Pink'	#2 Pot
	DWRH Dwarf Rhododendron	Rhododendron var. 'Bow Bells' & 'Jock'	#2 Pot
	POLY Sword Fern	Polystichum munitum	#1 Pot
	SPGF Goldflame Spiraea	Spiraea bumalda var. 'Gold Flame'	#1 Pot
	ADOG Arctic Fire Dogwood	Cornus sericea 'Arctic Fire'	#1 Pot
	ILEX Dwarf Holly	Ilex meserveae var. 'Blue Princess'	#1 Pot
	SARC Sweetbox	Sarcococca humilis	#1 Pot
	KVIB Korean Spice Viburnum	Viburnum carlesii var. 'Korean Spice'	#1 Pot
	MOCK Dwarf Mock Orange	Philadelphus lewisii var. 'Snowdwarf'	#1 Pot
	DAPH Daphne	Daphne x transatlantica var. 'Eternal Fragrance'	#1 Pot
	ITEA Sweetspire	Itea virginica var. 'Little Henry'	#1 Pot
PERENNIALS & GRASSES	CARX Variegated Sedge	Carex morrowii var. 'Ice Dance'	#1 Pot
	LAVA English Lavender	Lavandula angustifolia var. 'Hidcote'	#1 Pot
	SCIZ Kaffir Lily	Scizostylis coccinea var. 'Oregon Sunset'	#1 Pot
	TEST Flame Sedge	Carex testacea	#1 Pot
	KARL Feather Reed Grass	Calamagrostis acutifolia var. 'Karl Foerster'	#1 Pot
	MISC Zebra Grass	Miscanthus stractus	#1 Pot
	HOST Plantain Lily	Hosta var. 'Patnot'	#1 Pot
	HACK Hachionocloa grass	Hachionocloa	#1 Pot
	STIP Spear Grass	Stipa calamagrostis	#1 Pot
	CERA Geranium	Geranium macrorrhizum var. 'Alba'	#1 Pot
	IRIS Sweet Iris	Iris pallida var. 'Aureo-Variegata'	#1 Pot
	CONV Lily of the Valley	Convallaria majalis	#1 Pot
	DIAN Dianthus	Dianthus gratianopolitanus var. 'Firewitch'	#1 Pot
	DEUT Nikko Deutzia	Deutzia gracilis var. 'Nikko'	#1 Pot

GROUND COVERS	BEAR Bearberry	Arctostaphylos uva-ursi var. 'Vancouver Jade'	SP5
	COTO Trailing Cotoneaster	Cotoneaster	SP5
	GAUL Wintergreen	Gualtheda procumbens	SP5
	PACH Japanese Spurge	Pachysandra terminalis	SP5
	WOOD Sweet Woodruff	Galium odoratum	SP5
	FRAG Coastal Strawberry	Fragaria chlowensis	SP5
	AJUG Bugleweed	Ajuga reptans var. 'Burgundy Glow'	SP5
	BERG Bergenia	Bergenia cordifolia var. 'Bressingham Ruby'	SP5
	RUBU Thimbleberry	Rubus parviflorus	
VINES	CLEM Montana Clematis	Clematis montana var. 'Elizabeth'	#5 Pot
	ARM Evergreen Clematis	Clematis armandii	#5 Pot
	VIKG Virginia Creeper	Parthenocissus quinquefolia var. 'Engelmann'	#5 Pot
	HYDC Climbing Hydrangea	Hydrangea petiolaris (NOTE: 9 Hydrangeas per Green Screen; located at levels 1 & 5)	#5 Pot

MATERIALS LEGEND

SOD LAWN (Symbol: Dotted pattern)
 ASPHALT DRIVEWAY (Symbol: Grid pattern)
 UNIT PAVERS (TYPE 1) (Symbol: Square pattern)
 UNIT PAVERS (TYPE 2) (Symbol: Diamond pattern)
 PERMEABLE PAVERS (TYPE 3) (Symbol: Hexagon pattern)
 RIVER ROCK (Symbol: Irregular pattern)

FORSITE LANDSCAPE ARCHITECTURE
 #408-1581H HILLSIDE AVE.
 VICTORIA, BC V8T 2C1
 forsiteland@hotmail.com
 250.508.7885

THE DRAWINGS, DESIGN IDEAS AND FEATURES OF CONSTRUCTION DESCRIBED HEREIN ARE THE EXCLUSIVE PROPERTY OF FORSITE LANDSCAPE ARCHITECTURE. ALL COPYRIGHT AND PROPERTY RIGHTS ARE EXPRESSLY RESERVED. THEY ARE NOT TO BE REPRODUCED, COPIED, REPRODUCED, OR USED FOR ANY PURPOSES NOR ARE THEY TO BE ASSIGNED TO A THIRD PARTY WITHOUT EXPRESS WRITTEN CONSENT. IN THE EVENT OF ANY UNAUTHORIZED USE OF THESE PLANS BY A THIRD PARTY, THE THIRD PARTY SHALL NOT HOLD FORSITE LANDSCAPE ARCHITECTURE RESPONSIBLE.

LANDSCAPE ARCH. STAMP

RECEIVED
 DP1367
 2024-DEC-06
 Current Planning

2453 LABIEUX ROAD
 NANAIMO, BC

CLIENT: Nav Basi

REV. DATE	NUMBER	DESCRIPTION
07-22-2024	1	CONCEPT PLAN - FOR REVIEW

DATE: JULY 22, 2024
 SCALE: 1:100
 DRAWN BY: BF/RF
 LANDSCAPE CONCEPT PLAN
 L1